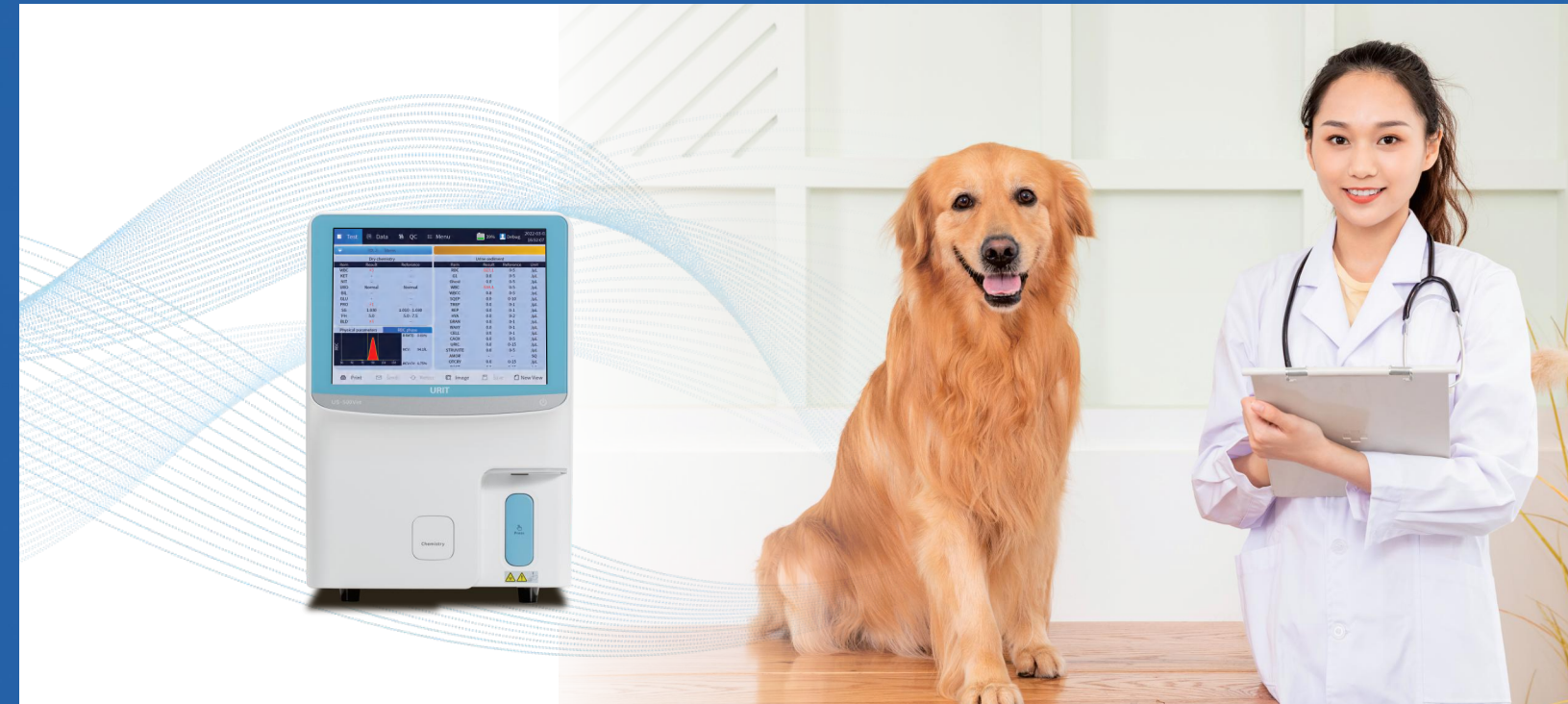


**URIT** *Since 1984*  
Global Diagnostics Supplier



## US-500Vet

### AI-Libre Veterinary Urinalysis Analyzer

World **First** semi-automatic AI-Libre Veterinary Urinalysis Analyzer

Compact, two in one design

**AI** technology (CNN, deep learning)

Automation of microscope with raw big picture

Ideal choice for small and medium size laboratory



#### URIT Medical Electronic Co., Ltd.

##### Head Office

Add.: No. D-07 Information Industry  
District, High-tech Zone, Guilin, Guangxi, 541004, P.R. China  
Tel: +86-773-2288586 Fax: +86-773-2288560  
E-mail: [export@uritest.com](mailto:export@uritest.com) [service@uritest.com](mailto:service@uritest.com)  
<http://www.urit.com>

##### Shenzhen Office

Add.: Room EJ, 24th Floor, New Baohui Building, Nanhai Road,  
Nanshan District, Shenzhen, P.R. China  
Tel: +86-755-26413721

Rev:202203-1(20220303)



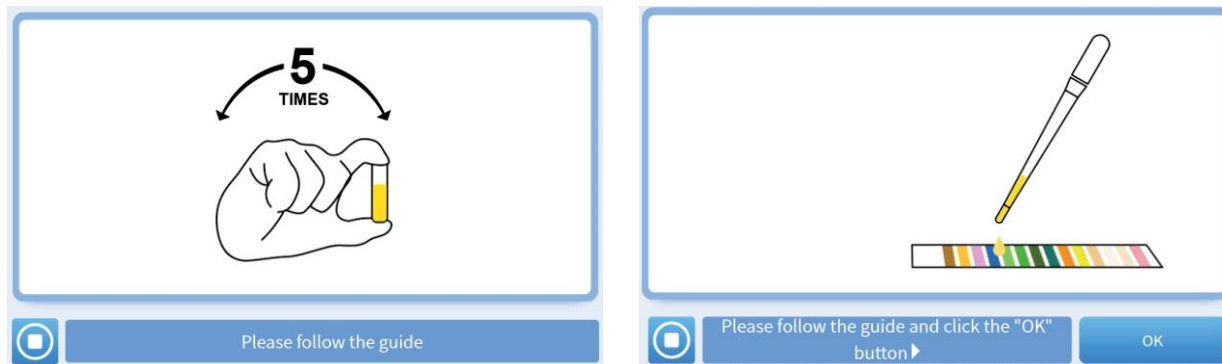
Guilin, China

# US-500Vet

## AI-Libre Veterinary Urinalysis Analyzer

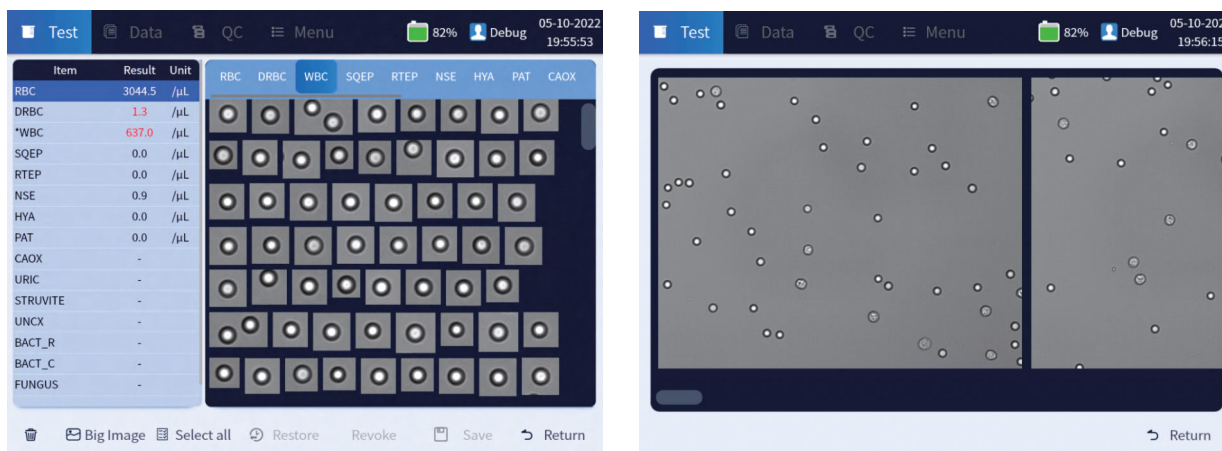


### Dynamic Graphic Guidance



### Automation of the Golden Standard

- Taking pictures with 40X magnification objective lens
- Provide raw full field images and individual particle images
- Two channels: one for testing, one for backup



Animal Info

Dry chemistry result

Physical parameters

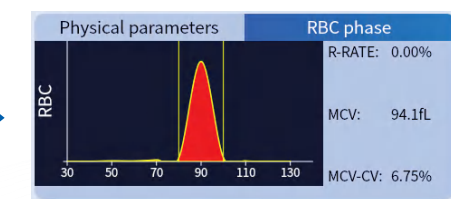
and

RBC phase

Chemistry		Urine sediment			
Item	Result	Reference	Item	Result	Reference Unit
Ascorbic Acid	0.6mmol/L	0mmol/L	RBC	270.8	0-15 /μL
Leukocytes	70CELL/uL	0CELL/uL	DRBC	0.0	0 /μL
Microalbumin	<=10mg/L	<=10mg/L	WBC	63.0	0-15 /μL
Creatinine	4.4mmol/L	4.4 - 17.6mmol/L	SQEP	0.0	0-5 /μL
Ketone	0mmol/L	0mmol/L	RTEP	0.0	0 /μL
Urobilinogen	Normal	Normal	NSE	0.0	0-5 /μL
Billirubin	0umol/L	0umol/L	HYA	0.0	0-1 /μL
Glucose	0mmol/L	0mmol/L	PAT	0.0	0 /μL
Protein	0g/L	0g/L	CAOX	-	-
Specific Gravity	1.040	1.015 - 1.045	URIC	-	-
Physical parameters		RBC phase			
Item	Result	Reference	Unit		
Color	Light yellow	Light yellow		R-RATE: 0.00%	
TUR	Clear	Clear		MCV: 94.1fl	
Cond	14.5	3.0-39.0	mS/cm	MCV-CV: 6.75%	
OSM	498	600-1000	mOsm/kg		

Alarms

Sediment result







# US-500Vet

## AI-Libre Veterinary Urinalysis Analyzer



### All in One

- Chemistry, sediment and physical analysis in one analyzer
- Robust yet compact



### Easy Maintenance

- Magnetic strip holder easy load and unload
- Auto focus without focus solution
- Auto clean function



### AI Technology

- Deep learning system
- Multi-layer neural network (CNN), more intelligent
- Expanded learning and migration learning technology, more compatible
- Strong hardware enhanced (CPU+GPU, MCU+FPGA)



### Automatic Retest

- Automatic dilute urine sample to retest when concentration is high
- Unique buffer cup to realize diluting function



### Less is More

- Routine consumption: UDE-50Vet detergent and UC VET 13 Plus urine strip only
- Minimum machine space and liberate more for lab
- Sampling volume is only 0.6mL



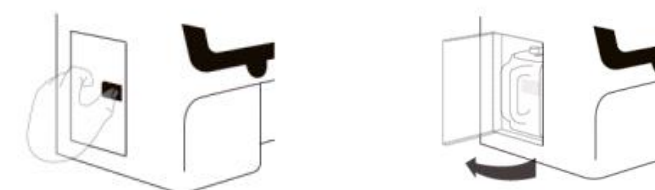
### Conductivity and Osmolality

- Evaluate kidney capability of concentrating and diluting urine
- Help to screen kidney damage at early stage
- Give indirect indication of kidney tubules and collecting tubules injury
- No interference from GLU, PRO
- No additional expense



### Reagent Friendly

- Integrated reagent pack easy loading and unloading
- Automatic registration when loading
- Routine cleaning detergent and deep cleaning detergent as a whole package





# US-500Vet

## AI-Libre Veterinary Urinalysis System

### Principle

**Chemistry:**

Dual wavelengths reflectance photometry

**Sediment:**

AI recognition technology

Automated microscope technology

Digital imaging technology

**Conductivity:**

Electrical impedance method

### Parameters

**Chemistry strip parameters:**

UC VET 13 Plus

LEU, KET, URO, BIL, PRO, GLU, SG, BLD, pH, VitC, MA, CRE, CA and UPC (protein and creatinine ratio)

**Sediment parameters:**

Automatic recognize 16 items,

- 8 quantitative items: Red Blood Cells, Dysmorphic Red Blood Cells, White Blood Cells, Squamous Epithelial Cells, Non-Squamous Epithelial Cells, Renal Tubular Epithelium Cells, Hyaline Casts, Pathological Casts

- 8 semi-quantitative items: Calcium Oxalate Crystals, Uric Acid Crystals, Struvite Crystals, Unclassified Crystals, Bacteria Rods, Bacteria Cocci, Fungus, Sperm

More items can be classified manually

RBC phase: R-RATE, MCV, MCV-CV

**Physical parameters:**

Conductivity, Osmolality, COLOR (Manual input), TURBIDITY (Manual input)

### Sample Volume

0.6mL

### Wavelengths

470nm, 550nm, 620nm, 720nm

### Animal Species

Cats and dogs

### Sample

Animal urine

### Strip

UC VET 13 Plus

### Reagent

UDE-50Vet detergent, UQC-50Vet QC, UQ VET QC and UCA-50Vet Calibrator

### Raw big picture

288 pictures for each sample

### Camera Pixels

1.3 Million Pixels

### Lens

40X

### Report Unit

Chemistry: Plus, ENG, SI, CONV

Sediment: / $\mu$ l, /HPF, /LPF, SQ

Conductivity: mS/cm

Osmolality: mOsm/kg

### Voice Prompt

Yes

### Print

Chemistry + Sediment + Physical parameters + RBC phase + Raw big picture

### Interface

Net port, USB, VGA, HDMI, COM port

### Results Storage

Up to 1 million results

### Weight

18kg

### Dimension

465mm × 270mm × 405mm (L\*W\*H)